

# Dermatology Summit

January 7, 2018

Noah Craft MD, PhD

CEO and Co-Founder

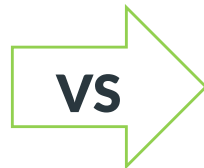
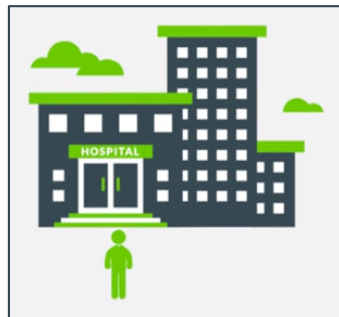
**Science** **37**

Accelerating biomedical research  
by putting patients first

# Our Solution – Bringing the trial to the patient

We fundamentally shift the center of research from the hospital to the patient's home

Traditional Site Based Approach



## Science 37 Patient-Centric Metasite™ Model



# NORA<sup>®</sup> - Network Oriented Research Assistant

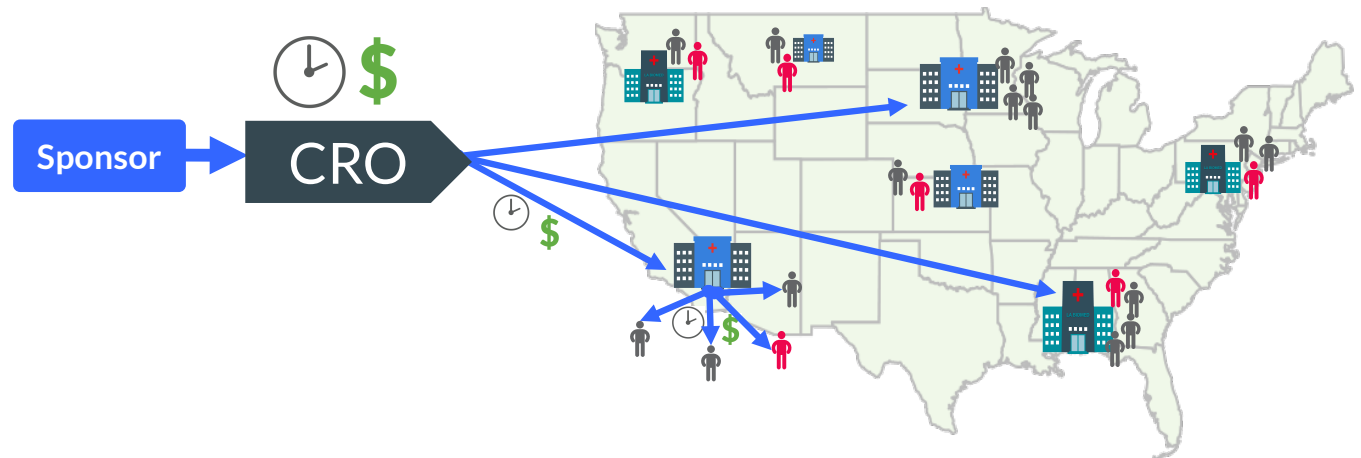


- Trial-oriented EMR
- Telemedicine Platform
- Mobile Data Collection
- Customized photography modules
- Sensor/Device Integration
- Virtual e-Consent
- Trial Database
- Recruitment CRM
- Logistics and workflow
- Randomization-Blinding
- Medication Adherence
- Remote Monitoring
- Fully Scalable
- Trial-specific configuration
- Customizable

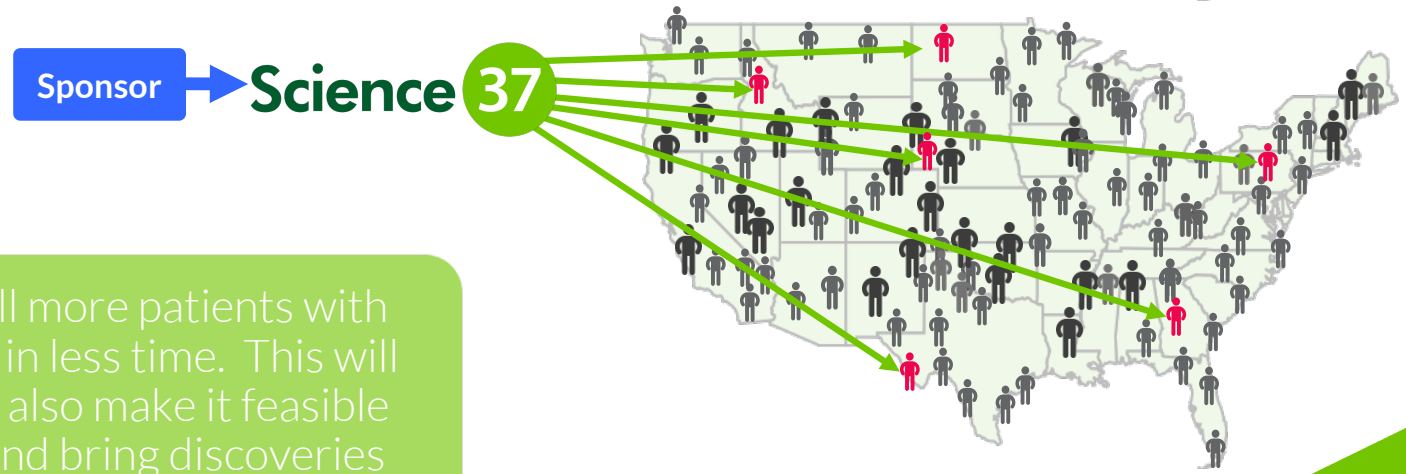
# Impact of the Science 37 Approach

The Science 37 highly networked approach allows engagement, recruitment, screening, and enrollment of large numbers of patients.

Current Model:  
Investigator-centric



S37 Model:  
Patient-centric

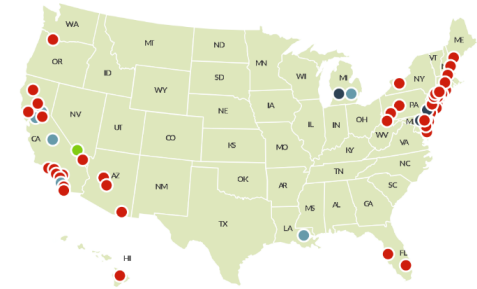


Science 37 can enroll more patients with fewer resources and in less time. This will accelerate trials and also make it feasible open new markets and bring discoveries to patients faster.

# Phase 3 Rare Disease RCT Success – Science 37 Exponentially Faster

## Rare Disease Trial : Pemphigus Vulgaris

Opened May 2015  
n=120, 11 Countries, 66 Sites



65 traditional sites (15 US)

S37 DCT Metasite

Annual Goal



1 patient/site

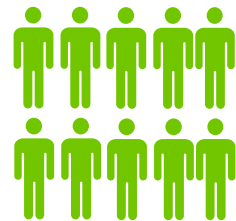


5 patients

Actual (9 months)



0.47 patients/site



10 patients

S37 DCT Metasite  
Referred 4 additional



Tel Aviv



NY



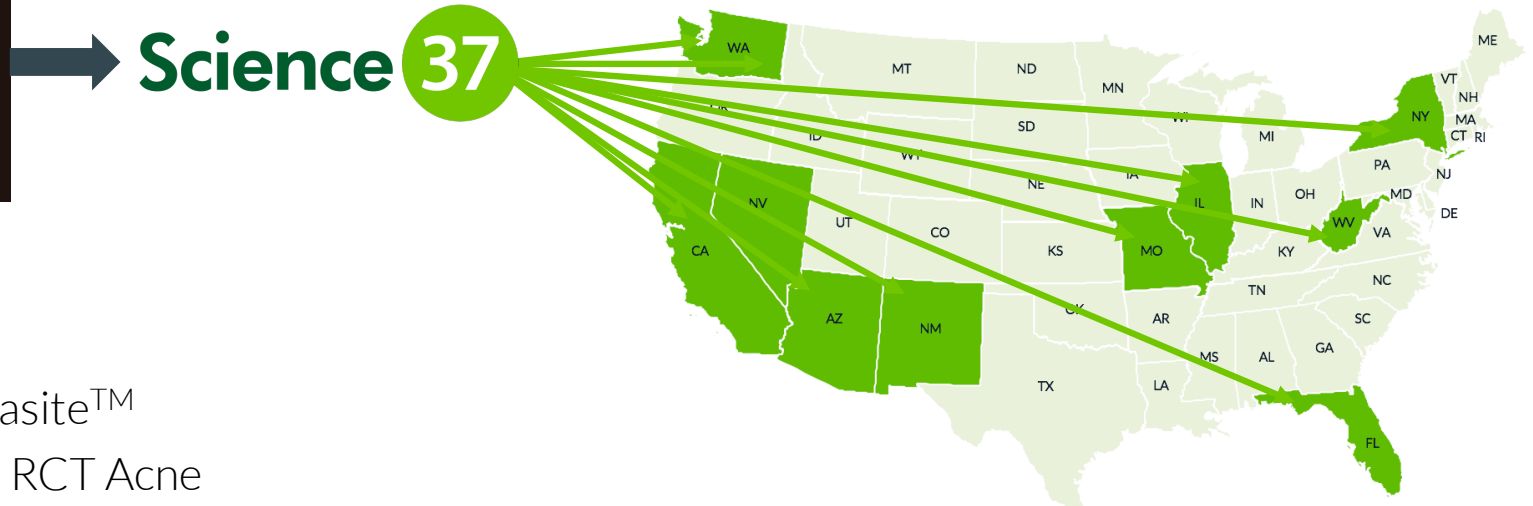
Chicago



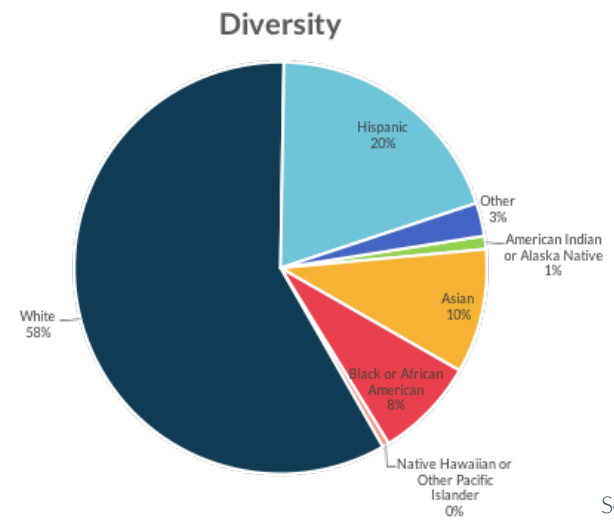
Philadelphia

20-30x faster  
than average site

# AOBiome Phase 2b End-to-End RCT as a Science 37 Metasite™ DCT



- One Metasite™
- Phase 2b RCT Acne
- 12 Investigators
- 11 states (37% of US population)
- 8000+ screened, 372 patients enrolled
- Cold-chain live bacterial drug
- Home microbiome sampling
- Est 30-50% savings in enrollment time
- FPI to data lock in 1 year



# Milestone Highlights and Key Focus Areas

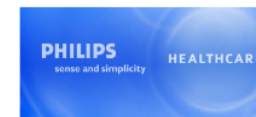
## Milestones

- \$73M raised to date
- 165+ FTE, 80+ investigators
- 10+ Active Clients – pharma, biotech, and device companies
- 5 Institutional partnerships
- 9 trials open, 6 completed, 5 more this quarter
- Strong enrollment performance
- 97% patient retention
- Multiple successful sponsor audits
- Multiple Enterprise/Strategic Partnership

## Focus Areas

- Therapeutic Areas of Interest
  - Dermatology
  - Neurology
  - Psychiatry
  - Oncology
  - Diabetes
- Dermatology Focus Areas
  - Chronic itch
  - Psoriasis
  - Acne
  - Microbiome
  - Atopic dermatitis
  - Vitiligo
  - Rosacea
  - Pemphigus vulgaris
  - Basal Cell Carcinoma

# Selected Investors, Partners, Supporters, and Clients





Thank You

Noah Craft MD, PhD  
noah@science37.com

